

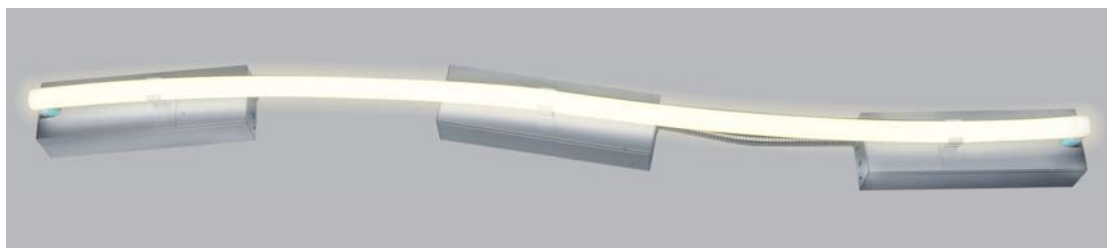
The Art and Science of Light

SPECIFICATIONS:

models: CR2 e50, e100 and e200
 primary power: 120V, 277V
 compliance: UL Listed
 control: Dimming compatible
 fixture housing: Clear anodized aluminum
 dimensions: 4' to 7'6" and custom lengths
 lamp color(s): See color chart on Details sheet
 update: April 6, 2012

FEATURES:

cCRVS 2.0 offers standard and custom curved lamps with seamless, end-to-end illumination, free from socket shadow. Using state of the art, silent, energy efficient electronic power supplies, cCRVS are shorter in height and more compact than traditional cold cathode systems. cCRVS fixtures ship pre-wired and assembled for installation in minutes resulting in significant labor savings. cCRVS 2.0 features ACL's new "Snap and Slide" extrusions for easy access to lamps and ballasts. cCRVS can be daisy-chained using trade size KOs for continuous pass-thru of electrical conductors in conjunction with standard electrical fittings and connectors. Configurations with single or double lamps are available in a wide range of colors. Combining cSTRP with cCRVS allows for enhanced flexibility to fit any design solution.



cCRVS 2.0 CUT SHEET

Project Name		Linear Feet		Date			
SPECIFICATION CODE:							
CR2	-	-	DR	-	S		
Product	Model	Lamp Qty	Environment	Color(s)	Primary	Dimming	Mount
cCRVS 2.0 Cold Cathode	e50 (1) e100 (1) e200 (1)	1 - 1 Lamp 2 - 2 Lamp (2)	DR - Dry	See Color Chart (3)	120V 277V	2 - 2 Wire(4) 3 - 3 Wire(4)	S - Surface

(1) e50 - Energy Saver, e100 - Standard Output, e200 - High Output. (2) Lamps per fixture.
 (3) For multiple colors place a comma after each selection. (4) Reverse phase low-voltage electronic dimmers are recommended for optimal performance.
 Specifications subject to change without notice.

 **ACL INC.**
 Architectural Cathode Lighting, Incorporated
cathodelighting.com

5301 Pacific Boulevard
 Huntington Park California 90255 USA
 Telephone 323.581.8800
 Fax 323.581.7971
info@cathodelighting.com