

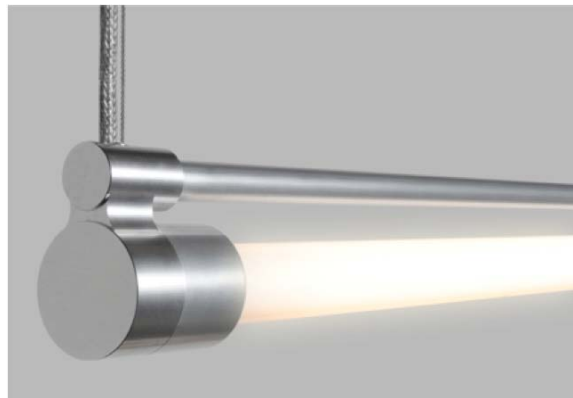
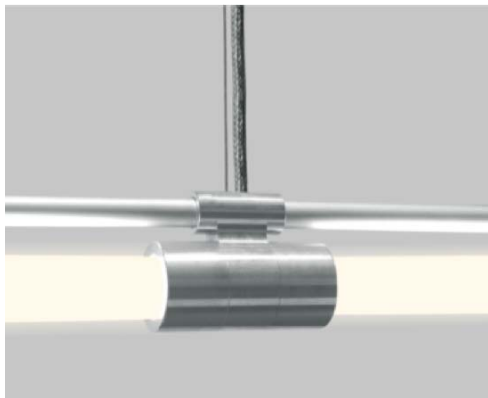
The Art and Science of Light

SPECIFICATIONS:

model: SLFL
 primary power: 120V, 277V
 Compliance: UL Listed
 control: Dimming Compatible
 finish: Clear Anodized Aluminum
 dimensions: 4'0", 5'0" and custom
 update: August 25, 2012

FEATURES:

New and improved Streamlite FL 2.0 (fluorescent) offers a creative way to illuminate an interior space while supporting energy efficient fluorescent lamps. ACL's new threaded lamp holders with no visible fasteners make this luminaire even more sleek and minimalistic than its predecessor. Streamlite FL 2.0 fixtures are available in standard T8, 4', 5' and 6' lengths, as well as 8' custom lamp length upon request. Lamps are mounted to an armature with multiple power supply options. The Streamlite FL 2.0 luminaire offers unlimited possibilities that are both aesthetically timeless and energy efficient.



STREAMLITE FL
 CUT SHEET

Project Name

Qty

Date

SPECIFICATION CODE:

Product	Model	Ballast	Emergency	Mounting	Nominal Length	Run
SLFL-T8 SLFL-T5	S01 - Armature Mount S02 - Ceiling Mount S03 - Remote	E - Electronic EHO - High Output ED - Dimming	0 - None X - Indicate quantity	CM - Cable Mount SM - Surface Mount	4 - 4' 5 - 5'	S - Single D - Double C - Continuous

4' Cable and power drop standard. Can be field adjusted. For custom length contact ACL.
 Specifications subject to change without notice. 073112

ACL INC.

Architectural Cathode Lighting, Incorporated

cathodelighting.com

5301 Pacific Boulevard
 Huntington Park, California 90255 USA
 Telephone 323.581.8800
 Fax 323.581.7971
 info@cathodelighting.com