

A Fusion of the Art and Science of Light

ET-STRUT PRODUCT DETAILS:

date: October 4, 2008

sheet description: Elevation and plan details

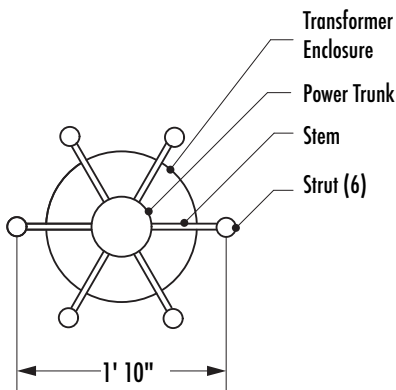
file: ETdetails.pdf

page: 1 of 1

Note: Also a smaller 9' ET - Strut is available with 4 struts and a 4.5" power trunk, contact ACL for more information.

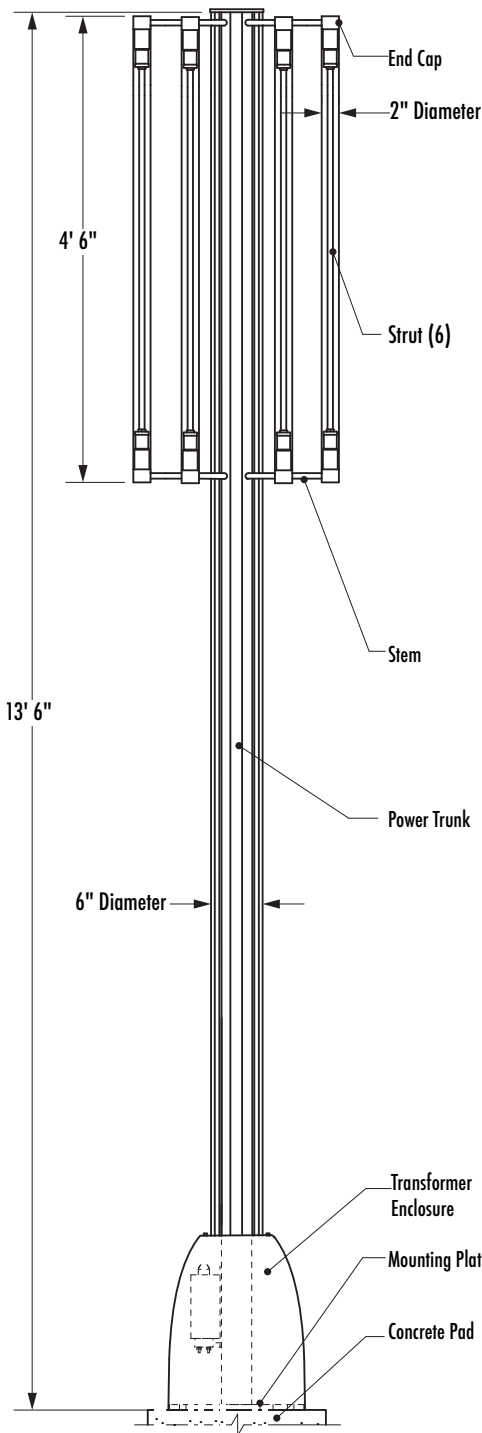
Power Requirement : 120 V 16 amps

Approximate Weight : 300 LBS



Plan

NTS



Elevation

NTS

DETAILS
ET - STRUT

8300 Cold White - CDT
6500 Daylight - DWT
5000TC Ice White - IWT
4500 Cool White - CLT
3500 Soft White - SWT
3000TC Warm White - WWT
2400 Incandescent - KWT
Candle White - CWT
Pineapple - PPL
Gold - GLD
Traffic Light Yellow - TLY
Orange - ORG
Ruby Red (Neon Only) - RRD
Coral Rose - CRS
Magenta - MGT
Violet - VLO
Powder Blue - PWB
Ocean Blue - OCB
Super Blue - SBL
Sky Blue - SKB
Super Turquoise - STB
Traffic Light Green - TLG
Staybright Green - SBG

Project Name

Date

Quantity

SPECIFICATION CODE: Note: For a variation (custom) of this product contact ACL to request a variation number and information.

Product	Standard	Environment	Color	Finish	Primary	Dim-able	Option
ET - ST (Electric Tree - Strut)	S01	DR - Dry DP - Damp WT - Wet	See Chart on Details sheet (1)	CAA TFA BSC WCA (2)	120V 277V (3)	DI - Dim ND - Non Dim	Also available a 9', 4 strut with 4.5" power trunk (Contact ACL)

(1) For multiple selections place a comma after each selection.
 (2) CAA - Clear Anodized Aluminum, TFA - Translucent Frosted Acrylic, BSC - Brushed Stainless Clad, WCA - Water Clear Acrylic
 (3) Special order available in 277V, contact ACL for more information.

ACL INC.

Architectural Cathode Lighting, Incorporated

cathodelighting.com

5301 Pacific Boulevard
 Huntington Park California 90255 USA
 Telephone 323.581.8800
 Fax 323.581.7971
info@cathodelighting.com